



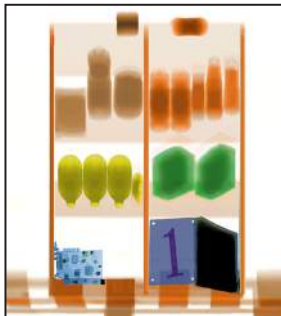
XIS-1517DV 320kV

Highest Penetration in the Market

Dual View Security: Pallet and Cargo Inspection



6 Color Imaging



Real-Time Diagnostics



The XIS-1517DV 320kV is an advanced X-Ray Inspection System with a tunnel opening of **152.4 cm x 170.2 cm** (60" x 67"). The XIS-1517DV 320kV utilizes both **dual view technology** and **high powered generators** for improved image screening and increased penetration. The XIS-1517DV 320kV was specifically designed for **in-depth screening clarity of customs and military cargo**.

The XIS-1517DV 320kV has a **low conveyor height** of just 35.6 cm (14") and can support **3000 kg (6600 lbs) of cargo** without compromising throughput speed, adding to the efficiency and security of any facility or transport hub. The XIS-1517DV 320kV is a quality XIS unit that offers the most **cutting edge technology in cargo security**.

Astrophysics has the **best lead times in the industry**. We offer immediate screening solutions with unparalleled order flexibility and customization.

All XIS Systems are equipped with **Real-Time Diagnostics**, a unique Astrophysics feature which allows users to monitor their machine health, thus greatly **increasing the system lifespan**.

An exclusive Astrophysics standard feature, **6 Color Imaging** enables operators to view screened objects in 6 colors, with each color correlating to a specific range of Atomic Z-Numbers. 6 Color Imaging enables operators to achieve **optimal material identification** and improve throughput with more effective screening technology.

Backed by a team of experts with more than **100 years of combined industry experience**, Astrophysics manufactures and designs **to the highest standards of excellence**.

With a focus on X-Ray Systems, the XIS Series features **top-of-the-line software and hardware technology** establishing Astrophysics as the **leader in innovation and quality**.

Astrophysics is headquartered in the United States, but maintains multiple field offices worldwide for **localized support**.

For your convenience, we also retain a dedicated Sales and Service team committed to providing a **personalized and timely response 24/7**.

General Specifications

- Tunnel Size: 152.4 cm x 170.2 cm
(W x H) 60" x 67"
- Dimensions: 1116.4 cm x 281.3 cm x 304.8 cm
(L x W x H) 440" x 110.7" x 120"
- Shipping Dimensions:
 - 1x 315.0 cm x 152.4 cm x 254 cm
124" x 60" x 100"
 - 1x 228.6 cm x 152.4 cm x 254 cm
90" x 60" x 100"
 - 1x 228.6 cm x 152.4 cm x 101.6 cm
90" x 60" x 40"
 - 3x 304.8 cm x 127 cm x 254 cm
120" x 50" x 100"
 - 4x 228.6 cm x 154.9 cm x 254 cm
90" x 65" x 100"
 - 2x 228.6 cm x 213.4 cm x 139.7 cm
90" x 84" x 55"
- Net Weight²: 16000 kg (35275 lbs)
- Shipping Weight²: 20000 kg (44095 lbs)
- Roller Bed Speed: 20 cm/s (40 ft or 12m/min) Forward or Reverse
- Roller Bed Height: 35.5 cm (14") from Floor
- Roller Bed Capacity: 3000 kg (6600 lbs) Evenly Distributed Load

Technical

- Sensitivity: 40 AWG Typical, 38 AWG Standard
- Spatial Resolution: 1.3 mm Horizontal, 1.3 mm Vertical
- Steel Penetration¹: 80 mm Typical, 75 mm Standard
- Contrast Sensitivity: 24 Visible Levels, 4096 Gray Level

X-Ray Generator

- Voltage: Dual 320kV Generators
- Tube Current: Dual 7.0 mA
- Cooling: Integrated Cooler Unit with Forced Air
- Duty Cycle: 100%, No Warm-Up Procedure Required
- Beam Direction: Horizontally Sideward, Vertically Downward
- Detector: 4480 Channels in L-Shaped Arrays

Computer

- Processor: Intel® Core i5, 3.1 GHz, 6MB cache
- Memory: 2 GB RAM at 1333 MHz
- Storage: 500 GB HDD
- Video Card: 1 GB Video Card, Dual Digital Display
- Platform: Windows® XP Pro
- Backup: Uninterrupted Power Supply (Computer Operation- 20 min)

Video

- Display Type: Dual 24" LCD Color Monitors
- Display Resolution: 1600 x 1200; 24 bit/pixel Color

Environmental

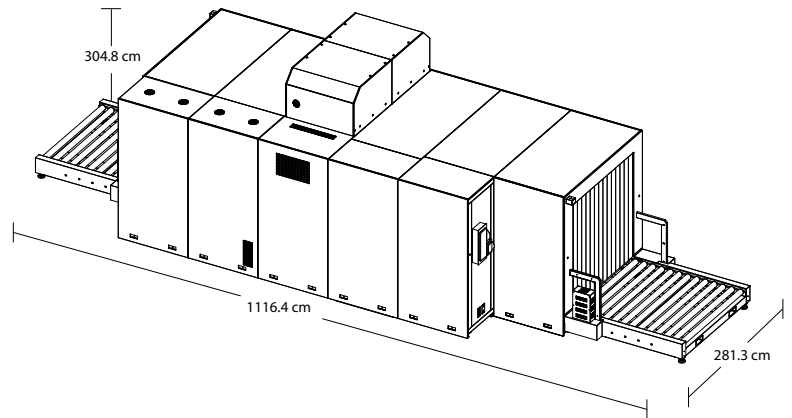
- Operating Temperature: 0°C - 40°C \ 32°F - 104°F
- Storage Temperature: -20°C - 60°C \ -4°F - 140°F
- Humidity: Up to 95% Non-Condensing

Electrical

- Power Requirements: 200-240 VAC, 50/60 Hz, 100 Amp Max

Health and Safety

- Compliant with USFDA, Center for Devices and Radiation Health Standards for Cabinet X-Ray Systems (21-CFR 1020.40).
- Typical Radiation leakage is less than 0.1 mR/hr (Leakage less than 0.5 mR/hr permitted by the Federal Standard).



Standard Features

- 6 Color Imaging
- 9 Quadrant Zoom
- Atomic Z-Number Measurement
- Auto Image Archiving
- Baggage Counter
- Color and Black / White Imaging
- Continuous Scanning
- Continuous Zoom up to 64x
- Vertical Zoom Panning
- Edge-Enhancement Imaging
- Geometric Image Distortion Correction
- High Penetration Function
- Heavy Duty Roller Bed
- Image Annotation
- Image Review
- Manual Bitmap Archive
- Material Discrimination
- Multi-Tier Accessibility
- Network Ready
- Organic/Inorganic Imaging
- Operator Training
- Picture Perfect
- Print Image Capable
- Pseudo Color
- Real-Time Image Manipulation
- Real-Time Self Diagnostics
- Reverse Monochrome

Optional Features³

- Climate Operating Kit
- Computer Based Training (CBT)
- Conveyor Capacity 3000 kg (6600 lbs) Evenly Distributed Load
- Custom Paint
- Extended Entry / Exit Roller Tables (50 cm Increments)
- Footmat Operator Interlock
- Heavy Duty Rubber Casters
- Local Language Support
- Radiation Meter
- Remote Workstation Configuration
- Screener Assist Software
- Test Kit
- Threat Image Projection (TIP) Software
- Density Alert



¹As tested on Astrophysics Inc. Test Piece.

²Weight of the System may vary depending on customization.

³Optional Accessories may affect, lead time, price, and weight of XIS-1517DV 320 kV. Please contact your Astrophysics Sales Representative for more information. Due to continued product research and development, Astrophysics Inc. reserves the right to amend all technical specifications without prior notice.